

SAFETY
FOR **SB**



MISSION STATEMENT

OUR PURPOSE IS TO BUILD STRONG CLIENT
RELATIONSHIPS BY DELIVERING QUALITY
SERVICES, WITH A HOLISTIC AND PRAGMATIC
APPROACH TO SAFETY, HEALTH, ENVIRONMENTAL
AND DESIGN RISK MANAGEMENT.

INTRODUCTION

Safety For Group Ltd (Safety For) is a multi-disciplined, award-winning consultancy, based in the Midlands.

This document has been prepared to give an insight into our vocations, showing how our experienced and knowledgeable team have assisted numerous Clients in their compliance with the safety, health and environmental aspects of their business.

We have a proven track record in all areas of the construction industry, working with some of the biggest contractors and developers, on many substantial projects around the country. Our work was recognised when we attained the Association for Project Safety's 'Principal Designer of the Year Award', in 2018.

Our team supports many clients in occupational health, safety and human resource management, providing advice across various sectors, including manufacturing, production, storage and distribution, retail, sports and leisure, local authorities and many more.

Safety For appreciate that an important aspect of compliance is ensuring that there is an auditable trail. However, we firmly believe that health & safety is only successful when applied with pragmatism. All our systems and documents are created to provide tangible benefits to the Client.



CORE VALUES

INSIGHTFUL

We demonstrate intuitive and proactive understanding, share expertise and apply a coordinated, imaginative and clear methodology to every situation.

VISIBLE

We bring tangible benefits by developing relationships with our Clients, providing an influential presence as an integral part of the team.

PROGRESSIVE

We offer a solution that is modern and mindful of impending changes within the industry. We passionately strive to improve meticulous delivery.

EXEMPLARY

Our work is worthy of imitation, offering a reliable and trustworthy model committed to client success. As a team we present pragmatic, diverse and innovative ideas.

SERVICES



GENERAL WORKPLACE HEALTH & SAFETY

When done correctly, it has been proven that robust occupational health and safety arrangements can and do have significant and positive benefits for a company and its employees.

OUR team learn about YOUR business and people
to fully understand YOUR needs and make them OUR priority

Safety For believe in helping and supporting companies to develop a positive safety culture within their business. We become part of your team, working closely with your people to develop a 'best practice' approach. We support you in making your team stronger, whilst ensuring your company's legal obligations are met, your reputation upheld, and your team are happy with the Health and Safety Management practices.



Regulation 7 of the Management of Health and Safety at Work Regulations 1999 requires all employers to appoint a competent person to help them comply with health and safety regulations.

Our team of professionals bring a wealth of experience spanning various industries and over 30 years in all aspects of occupational health and safety. We understand how varied the workplace can be, so with our range of skills and industry experience, combined with knowledge, and jargon-free approach, our Clients can rest assured they are getting the best health and safety support.

We also recognise that in certain circumstances, Safety For need to engage competent services to expand the support we can give you. To accomplish this, we have our own network of specialists that we work alongside which includes but not limited to;

- Human resource and management professionals.
- Occupational Health support services.
- Asbestos management experts.
- Legionella management specialists.
- Fire design and management consultants.
- Security and terrorism consultants.
- Mental health professionals.



PRINCIPAL DESIGNER & PRINCIPAL DESIGNER (ADVISOR)

The Principal Designer is integral to the design risk management process in the safe construction, use, maintenance, and demolition of a building/structure.

Safety For are competent to act as Principal Designer, utilising our bespoke CDM Policy, (aligned with the Royal Institute of British Architects [RIBA] Plan of Works 2020), in the delivery of an auditable process, to ensure health and safety is at the forefront of design.

Our proven track record and experience across all sectors of civil work, remediation, regeneration, construction, demolition, and refurbishment, allows us to be pragmatic, whilst ensuring compliance throughout the project.



Whether engaged by a Client, Designer or Principal Contractor, at Safety For we use our expertise and experience to support the whole project team, adding additional value where we can.

Many architectural/design practices misjudge the Principal Designer role, and/or just want to focus on their core business. Our partnerships with many architectural practices have also provided a 'one-stop-shop' option to Clients, helping their business in confidently promoting and accepting the role of Principal Designer, with our support. The added benefit to their team of designers, is that our interaction with the design team often aids their personal development in CDM and design risk management.



CDM ADVISOR

For any Client who understands the importance of health & safety, they will also appreciate that a competent CDM Advisor is key.

Safety For can provide comfort for the Client in ensuring the project team are fulfilling their duties and protecting all those involved. This is particularly key when utilising a design and build contract.

As CDM Advisor, Safety For can provide competent CDM advice and will guide and assist the Client in carrying out their duties under the CDM 2015 Regulations. This can include HSE F10 notification submissions, competence assessments, preparation of pre-construction information, health & safety file review, project team CDM training and ad-hoc health & safety advice and assistance.

Safety For have worked with some of the largest UK developers and Principal Contractors on construction schemes, including design and build projects, new build, demolition, refurbishment, brownfield redevelopment, energy schemes and residential developments..



OUR CREDENTIALS

With over 100 years' combined experience providing CDM services to major clients across the UK, our Principal Designer team are all either registered Members of the Association for Project Safety (APS) or are Chartered Members of the Institution of Occupational Safety and Health (CMIOSH).

Safety For is a Registered Practice of the Association for Project Safety for both Principal Designer and CDM Advisor services. The Principal Designer and CDM Advisor services are included in our Quality Assurance Management System.

RECOGNITION

Prosurv Consult, the project management company, delivering the Swansea University Bay Campus for St. Modwen Developments, employed Safety For Design (now part of the Safety For group) to deliver the Principal Designer role.

Winning the APS PRINCIPAL DESIGNER OF THE YEAR award in 2018 was accredited to our design risk management policy and processes.



O&M MANUALS & SOFT LANDING PROCESS

The collation of the Operation and Maintenance manuals (O&M's) can be a significant burden on a Principal Contractor, the delivery of which leaves a lasting impression on any client.

Safety For, have a dedicated team who can undertake the entire process, reducing the workload from the Principal Contractor, whilst still providing regular updates to satisfy stakeholders that milestones continue to be met throughout the project lifecycle.

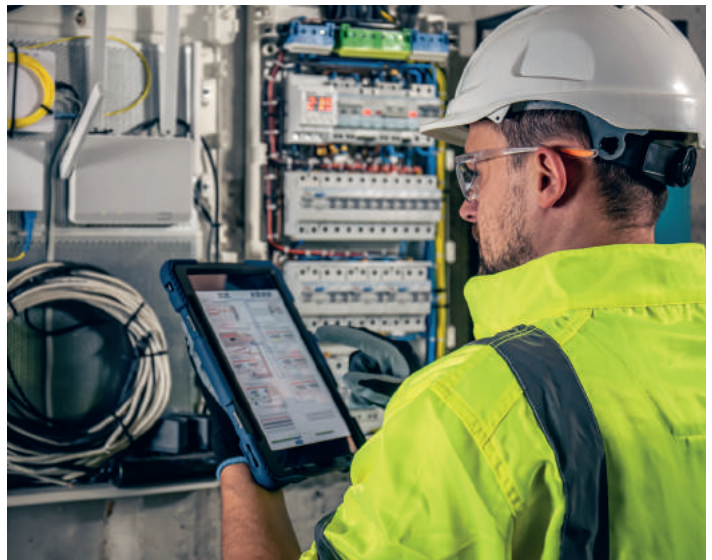
Safety For offer two levels O&M packages to help you meet Client and contractual requirements.



Essentials Service Level

This essentials service offers a structured and co-ordinated process for collation of the O&Ms in line with standard employers' requirements, including;

- Project specific O&M format, utilising and adapting our standard format.
- Easy to use cloud-based data collection which can be readily accessed for contractor information.
- Real time tracking of the O&M as it develops throughout the project, which can be distributed to key decision makers through auditable key performance indicators.
- Dedicated O&M Co-ordinator who will oversee all delivery aspects of the service.
- Delivery of the electronic copy of the O&M's, both at draft and final stage.



Enhanced Service Level

This is our most popular service level chosen by Clients and Contractors alike. In addition to the essentials service, the enhanced service includes more detail and information, including;

- O&M structure bespoke to accommodate or support Client Building Management Systems (BMS) requirements.
- Assistance with O&M and BMS integration.
- Detailed asset registers, key schedules, spare part register, etc.
- On-line/e-learning workshops for Clients in supporting their 'soft landing' process.
- Contractor O&M "best practice" workshops tailored to the needs of the Contractors, Clients etc. These informal and interactive workshops help to build a good foundation to create good quality, specific O&M manuals to benefit all involved.



SOFT LANDING STRATEGY & SUPPORT

Safety For's, Soft Landings Strategy encapsulates the smooth transition from construction phase to practical completion and handover, including the rectification period.

This strategy is bespoke, as every client requires something specific, therefore the structure and pricing for this service is based on the needs (or wants) of the end user.

Safety For will agree and provide a clear and structured methodology to hand over the building to the end user, focusing on key documentation and familiarisation of the building and its systems in the lead up to handover.

Adequate training and familiarisation workshops are planned well in advance to ensure the end user is aware of key building systems and procedures to avoid a 'cold' start in the operation of the building.

This strategy also details the aftercare procedures and protocols for communicating, recording, reacting to and closing out of defects during the rectification period (defects liability period).

Typical aspects of a strategy will often include the following;

- Co-ordination with Building Management Systems (BMS)
- Fire strategy co-ordination
- Maintenance schedules and training support
- Video based instruction
- Defect reporting and management process
- Post practical completion CDM compliance support
- End of defect period review

O&M EXEMPLAR - VINCI CONSTRUCTION UK – SWANSEA UNIVERSITY

Safety For have worked with several Contractors/Clients in delivering O&Ms on many prestigious projects, including Swansea University Bay Campus.

Consisting of both residential and academic buildings, the project required the collation and co-ordination of 165 Contractor manuals.

Safety For used developed systems, to ensure all information was collated in a structured, user-friendly format for the University Facility Managers, ensuring all parties had the correct information to safely manage the buildings at practical completion and throughout their lifecycle.

A small selection of other project examples around the country include West Midlands based Delifrance - A distribution centre in Crewe, Manchester University Fallowfield Campus, The Curve student accommodation in Shoreditch, 11 storey office block in Coventry, a public energy centre in Millbrook - North London and elements of New Covent Garden Market in London, to name but a few.

[See testimonial 1](#)



CONSTRUCTION HEALTH & SAFETY

We appreciate that all Contractors need help from time to time, so whether it's writing a Construction Phase Plan, providing ongoing site safety support, or producing risk assessments and method statements, Safety For can help in all aspects of construction and contractor health and safety.

We also aid contractors in gaining Safety Schemes in Procurement (SSIP) accredited status, supporting your team in collating and providing appropriate documentation, policies, and evidence.

Through our Competent Support service, Safety For can provide a regular toolbox talk programme, proactive safety initiative campaigns, hot topic and legislation updates, etc.

With a strong site inspection and auditing team, providing that crucial 'fresh pair of eyes' assessment, our Advisors are there to provide a 'critical friend' appraisal with a robust encouragement and support approach. Our proactive team will always provide the support that works best for your situation and requirements, whilst ensuring health and safety legal compliance.

TRAINING

Safety For is an Approved Training Organisation delivering a range of courses, covering all operations and industries. Our training conveys key messages, in a clear and concise delivery, suitable for all levels of delegates.

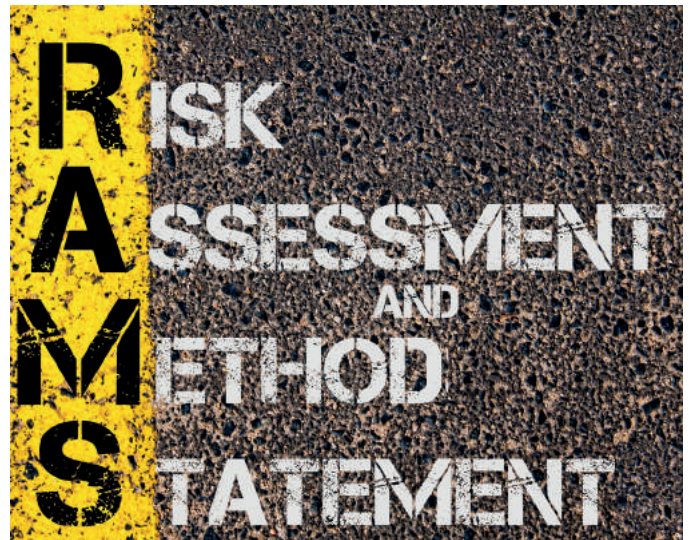
Given our teams vast range of knowledge and experience, we tailor our courses, making them relevant to our audience and your industry.

Safety For training packages can be delivered via Microsoft Teams (or other virtual platform), at our offices, your location of choice as well as at training locations around the United Kingdom.

Our inclusive and interactive courses result in better quality training, increased engagement, and a safer workforce. We also have a comprehensive list of e-learning training and awareness packages to support a CPD programme.

Safety For are an approved UK Asbestos Training Association (UKATA) training centre, delivering high quality, accredited asbestos awareness training throughout the UK. By attending a UKATA accredited course, you can be assured that the content, tutor and course delivery have been audited and verified independently. Delegates can be expected to achieve a higher standard of learning, which is confirmed by an end of course knowledge test. Our fun, interactive learning environments take the pressure out of being "in the classroom" as we understand this can be very daunting for some individuals.

This course covers the fundamentals of managing the risk of asbestos and understanding how not to disturb it during your work. In addition, those individuals wishing to progress into working with asbestos, this course is the starting point to your career.



FIRE MANAGEMENT & FIRE RISK ASSESSMENT



Robust fire risk mitigation and management is critical to every business and workplace. At Safety For we understand what is needed to be compliant and safe. Whether you operate as a landlord, are responsible for property facilities, property management, offices, or other working environments, you will be required to consider the risk of fire.

Fire risk assessments are required to meet with The Regulatory Reform (Fire Safety) Order 2005. The objective was to simplify the fire safety process, while at the same time placing a greater onus on the business owner or Landlord to carry out fire risk assessments. This means that the responsibility for complying with the Fire Safety Order 2005 rests with the 'responsible person'.

Many people are not sure if they are a 'responsible person' or if they have any duties under the relevant legislation. You may be a responsible person even if you don't own a property or workplace and this is where a lot of people find difficulties.

Our dedicated fire specialists are here to help. Safety For can complete and review fire risk assessments, assess existing fire control measures and implement and review the company's fire strategy, ensuring that they are fit for purpose.

Safety For can offer assessment of responsibilities within your organisation and outline what you may be required to do.

Our fire safety services include;

- Fire Training & Guidance
- Fire Risk Assessments & Reviews
- Fire Strategy & Fire Safety Policy
- Disaster & Emergency Recovery Plans

Our competent Fire Risk Assessors can quantify and advise on physical risks within the built environment and then converse with our Clients, whether they are Designers, Employees, Insurers, Owners, or Occupiers.



AUDITS & INSPECTIONS

At Safety For we understand the importance of monitoring health and safety standards in any workplace. Our team of professionals are here to help companies review their arrangements by conducting 'snapshot' inspections or detailed audits.

Whether it is Construction – Vacant Site – Environmental – Racking – Plant Operations – Fire – Noise – Task and Process – CDM2015 – Documentation, or any other evaluation to identifying potential improvements, Safety For have competent personnel to assist.

An important part of any H&S management arrangements is continual improvement. Safety For can offer that review to ensure that management systems are updated and reflect best practice within the industry.



COMPETENT SUPPORT

Whilst our Clients may know of their explicit legal duty to appoint a competent person to advise on and manage health and safety, we appreciate not all businesses have the resources in-house.

Safety For can offer a competent support package, tailored to the company's needs to help to ensure that businesses are legally compliant. Whatever the industry or size of company, Safety For can be relied on to provide expert competent advice and guidance, *there when you need us.*

Safety For offer proactive advice, developing a positive health and safety culture that is recognised as 'best practice'.

Where required, we have assisted our Clients in communicating with the HSE when they visit and/or when dealing with a potential injury claim investigation.

Many of our Competent Support Clients benefit from Safety For's 'RiskMan' cloud-based storage which offers a secure platform to store, review and update documents by all permitted users - whether used as an interactive register of risk, H&S review and progress minutes, action planner or simply a location to share documents, *RiskMan* is offered as an upgrade to our Enhanced Competent Support Package.



ACCIDENT INVESTIGATION & SUPPORT



For any business, being involved in any serious incident/accident can be harrowing and can have long lasting effects for both the company and individuals involved. Our team of qualified health and safety professionals can take the lead in incident/accident investigation and support the business and individuals through the process.

Safety For assist with 'translating' actions and feedback from the HSE/others, through a 'lessons learnt' process, ensuring clear communication throughout the workforce, to enhance the safety culture and effect change and improve your operational arrangements and safeguard compliance.

Safety For accident/incident support provides an external, impartial investigation that often discovers 'root cause' issues that can be overlooked by internal resources. Our investigation reviews all-encompassing circumstances and provides a 'gap analysis' report for clear actions to improve.

SHE SUPPORT
EXEMPLARS



ST MODWEN PROPERTIES PLC

OUR SERVICES

- SHE COMPETENT SUPPORT
- SHE MANAGEMENT POLICY
- SHE ARRANGEMENTS & DOCUMENTATION
- AUDITS & INSPECTIONS
- TRAINING PROVISION
- SAFE SYSTEMS OF WORK
- ENVIRONMENTAL SUPPORT
- UNDERTAKING ACCIDENT INVESTIGATIONS
- REVIEWING ACCIDENT INVESTIGATIONS & EFFECTIVENESS
- CDM POLICY / ARRANGEMENTS



Safety For became involved with St Modwen Properties PLC through our association with Prosurv Consult, one of St Modwen Properties PLC's leading project management companies.

In 2009, we wrote a Safety, Health & Environmental Policy for St Modwen Properties PLC, which was a key requirement for their bid in acquiring all of BP's disused land in the UK.

Recognising our competence in all areas of H&S, we were asked to review St Modwen Properties PLC's overall health and safety arrangements, and subsequently wrote their first formal Safety, Health & Environmental Policy in 2010. Mark Dyche went on to formulate an implementation programme across all elements of the business, the development of a house-building division, and head up St Modwen H&S Steering Group.

As part of our role as competent advisors, we provided training for board members and the leadership team including the following;

- H&S policy implementation & development.
- Directors' role in health & safety.
- Health & safety and the leadership team.
- Leadership team role in accident prevention and investigation.
- Asbestos awareness training.
- Environmental management & sustainability.
- Compliance with CDM2007 and again with change to CDM2015.

The Safety For team went on to write co-ordinated Safety, Health & Environmental policies, and arrangements for subsidiary companies of St Modwen Properties PLC such as Edmonton Green Shopping Centre, Coed Darcy Limited and Neath Canal Navigation Company.

[See testimonial 17](#)



BIRMINGHAM WHOLESALE MARKET

OUR SERVICES

- SHE COMPETENT SUPPORT TO SITE MANAGEMENT TEAM
- SHE MANAGEMENT POLICY
- SHE ARRANGEMENTS & DOCUMENTATION
- AUDITS & INSPECTIONS
- TRAINING PROVISION
- FIRE SAFETY MANAGEMENT
- UNDERTAKING ACCIDENT INVESTIGATIONS
- REVIEWING ACCIDENT INVESTIGATIONS & EFFECTIVENESS
- CDM POLICY / ARRANGEMENTS
- CONTRACTOR ASSESSMENT & MANAGEMENT
- ADVISORS TO THE BOARD



Birmingham Wholesale Market is one of the largest integrated wholesale markets in Europe, providing fresh produce to pubs, restaurants, hotels, caterers, and local retail across the Midlands and beyond. Within the market there are numerous traders operating out of individual units, each with their own unique set up. There are large numbers of members of the public and traders visiting the markets, making it a higher-risk work environment.

The competence within our team and group structure, allows Safety For to also provide CDM advice in the management of maintenance and construction projects and review the fire arrangements within the market to ensure compliance.

Our approach to fire safety involved us in completing a bespoke fire strategy, updating the risk assessment and current fire controls, all whilst engaging with market traders and market employees in the development of the bespoke and robust fire management strategy within the market environment.

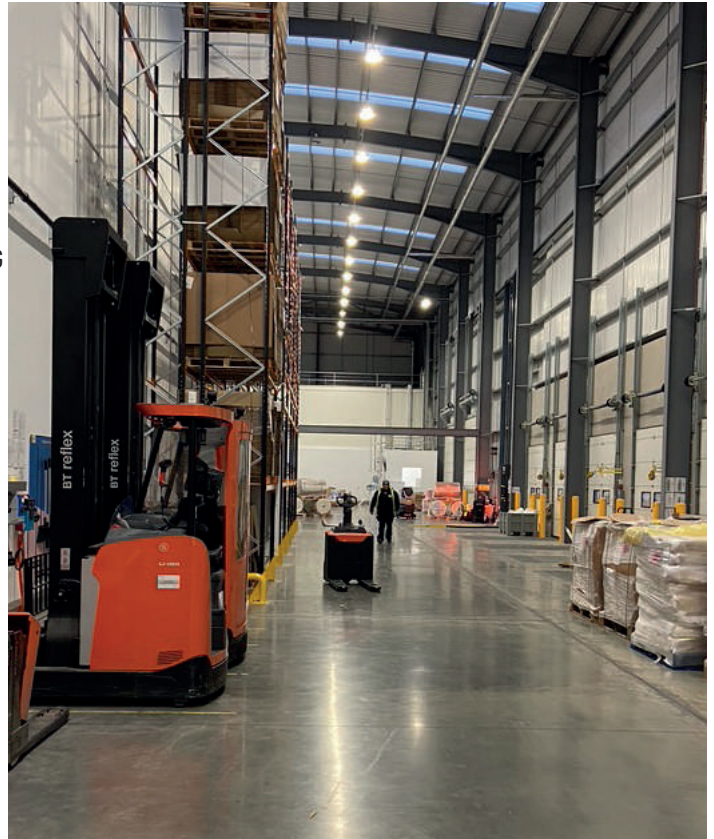
[See testimonials 2 & 3](#)



BUTTERNUT BOX

OUR SERVICES

- REVIEW ARRANGEMENTS - *SHE ASSESSMENT & GAP ANALYSIS*
- SHE COMPETENT SUPPORT
- DEVELOPING 'PAPERLESS' RISK ASSESSMENTS AND RISK MANAGEMENT SYSTEM
- DEVELOPING 'PAPERLESS' STANDARD OPERATING PROCEDURES
- TRAINING MATERIAL REVIEW - INDUCTIONS, MANUAL HANDLING, MENTORING, RISK ASSESSMENT AND ACCIDENT INVESTIGATION
- COACHING TEAM OF SAFETY CHAMPIONS & FOLLOW ON SUPPORT
- INCIDENT/ACCIDENT INVESTIGATIONS & PROCESS DEVELOPMENT
- INVESTIGATION AND GUIDANCE TO AID HSE CONTACT
- FIRE/DSEAR ASSESSMENTS
- HEALTH & SAFETY LEGAL COMPLIANCE REVIEW
- FORK LIFT TRUCK OPERATION COMPETENCE ASSESSMENT



Butternut Box make high quality dog food from their kitchen in Worksop, Nottinghamshire, just off junction 34 of the A1. Employing circa 500 people at their facility means there can be many health and safety considerations and challenges, with various focus points across the sales, office, production, fulfilment, warehousing, facilities and distribution operations. Safety For have offered the required support at the time to ensure a combined approach across the business

Safety For started providing SHE support and guidance to Butternut Box at their Worksop facility in 2021. Working closely with the Head of Engineering, Marc Crossfield, who wanted support in reviewing and developing the 'paperless' H&S systems and existing arrangements further and support with particular focus on high risk areas such as Manual Handling.

With such a large workforce undertaking a wide range of skills and tasks, it was recognised by Marc and his team that health and safety had to be inclusive in the personnel and kitchen culture. This was facilitated by establishing a team of *Safety Champions* from the workforce. Safety For assisted in this process and provided a two-day training course for the champions, which included;

- Introduction of team and objectives.
- General health and safety information including;
 - Responsibilities.
 - Developing a safety culture.
 - Communicating the safety message.
- Risk assessment training.
- Formulating safe systems of work in the form of Standard Operating Procedures (SOPs).
- On-the-job training, undertaking a risk assessment and writing a supporting SOP.
- Accidents and incident management.
- Starting a *Safety Champions* CPD training programme - *Noise & Hearing Awareness Training*.

Safety For engage in discussions with the *Safety Champions*, through their 'Slack' communication platform allowing for the support and continued development of H&S management team, in all areas of health and safety

[See testimonial 4](#)

CHIRK TOWN COUNCIL

Safety For were appointed as H&S Advisors to Chirk Town Council in 2021 and have been retained to advise and support the Council delivering several responsibilities, including the maintenance of the town's several recreational parks and playgrounds, the war memorial, the Parish Hall, Chirk cemetery and the installation of christmas lights, etc.

Chirk Town Council also organise local events and serves a community of approximately 3,400 residents (2011) consisting of 15 Councillors as well as retained employees. This requires assessment, organisation, and the management of the associated risk to ensure the safety, health and welfare of council personnel, retained employees, volunteers and the visitors, members of the public, and contractors. Risk Assessment Method Statement documents have been prepared for events of varying size and environments.

Following the *H&S Health-Check* and gap analysis, we created documentation for anything missing or unsatisfactory and reviewed/refined arrangements in place to ensure compliance with health and safety legislation.

The Councillors, Clerk and supporting council team have been very receptive and proactive in ensuring the wellbeing and confidence of their community with safety, health, and welfare at the forefront. Advisors from Safety For delivered an update on progress to date, plans for future health and safety development, and guidance on health and safety responsibilities of Councillors and the Clerk/Proper Officer.

[See testimonial 5](#)

QUIGLEY HORSEBOXES LTD

Safety For were appointed as H&S Advisors to Quigley Horseboxes Ltd in 2021 and have been retained to advise and support the business and develop any future requirements.

Quigley Horseboxes Ltd specialise in the fit-out of new vehicles and the refurbishment and fit-out of pre-owned horseboxes. Activities include welding, bodywork fabrication and paintwork preparations, internal compartment and furniture build.

Safety For were brought in to support the Office Manager recently appointed to review, manage and improve (where required) the health and safety arrangements, training and understanding of the workforce. This began with the initial Safety, Health & Environmental (SHE) Assessment which acknowledged areas of compliance, areas requiring action and suggestion for measures that would meet and, in some cases, even surpass benchmark safety.

Working closely with the workshop team and office administration, the higher risk activities were addressed first and the action plan raised through the SHE assessment was addressed through regular meetings and correspondence. Review of H&S Actions against an insurance survey offer clear guidance for compliance with health and safety law.

Future plans include training, upskilling and regular spot checks to challenge risk assessments, policies and arrangements.

OUR SERVICES

- REVIEW ARRANGEMENTS - *SHE ASSESSMENT & GAP ANALYSIS*
- SHE COMPETENT SUPPORT TO TOWN COUNCIL
- SHE MANAGEMENT POLICY / ARRANGEMENTS
- DEVELOPING RISK ASSESSMENTS FOR COUNCIL OPERATIONS AND EVENTS
- CREATE FACILITY 'HIRE PACK' INCLUDING RISK ASSESSMENTS AND EMERGENCY PROCEDURES
- H&S RESPONSIBILITY & LEADERSHIP TRAINING FOR COUNCILLORS & TEAM
- TRAINING & GUIDANCE IN SUBJECTS SUCH AS LONE WORKING, FIRE SAFETY, MANUAL HANDLING, ETC
- CONTRACTOR PRE-QUALIFICATION PROCESS
- COORDINATING LEGIONELLA ASSESSMENT & CONTROL
- COSHH ASSESSMENT & GUIDANCE

OUR SERVICES

- REVIEW ARRANGEMENTS - *SHE ASSESSMENT & GAP ANALYSIS*
- SHE MANAGEMENT SYSTEM CREATED
- SHE COMPETENT SUPPORT - *INCLUDING SUPPORT WITH HSE VISIT*
- RISK ASSESSMENT - *GENERAL WORKPLACE, WELDING*
- COMPANY SHE INDUCTION AND DOCUMENTATION CREATION INCLUDING PLANT & EQUIPMENT INSPECTIONS AND TOOLBOX TALK LIBRARY
- H&S TRAINING & GUIDANCE ACROSS THE BUSINESS

NIGHTINGALE HOUSE HOSPICE

OUR SERVICES

- SAFETY, HEALTH AND ENVIRONMENTAL (SHE) ASSESSMENT FOR THE MAIN HOSPICE, CAFE AND ALL RETAIL UNITS
- COVID-19 REVIEW - LESSONS LEARNT
- DOCUMENTS AND TEMPLATES CREATED FOR FACILITIES MANAGEMENT, RETAIL OPERATIONS AND ADMINISTRATION AREAS
- RISK ASSESSMENT - CREATION AND REVIEW ACROSS ALL AREAS
- RISK ASSESSMENT AWARENESS TRAINING
- ATTEND & SUPPORT H&S COMMITTEE MEETINGS
- SHE COMPETENT SUPPORT

maintenance of the facility and the safety of all who work in and visit the premises as well as retail staff, café and kitchen personnel, volunteers and fundraising teams who work both at the hospice and remotely. This requires individual and collective needs to be considered.

Safety For have worked closely with all teams to understand the daily activities, risk assess and offer support with appropriate arrangements. This has been supported by training and upskilling of supervisor and leadership teams to understand and effectively manage risk across the varying activities.

Safety For were brought in during the COVID-19 pandemic, which was testing for all industries, in particular care services such as these which placed stress and demand on all resources, however Nightingale House Hospice continued to hold the safety, health and welfare of their employees and volunteers at the highest level throughout.

Regular meetings with the facilities management team, heads of department and shareholders sees health and safety a vital and valued part of the organisation's success.

Safety For were appointed as H&S Advisors to Nightingale House Hospice in 2021 and have been retained to advise and support the business and develop any future requirements.

Nightingale House Hospice provides specialist palliative care services for those with life-limiting illnesses, as well as supportive services to their families. Servicing patients within Northeast Wales and the border areas, their work is supported by retail and café sites and the efforts of the fundraising team and events, campaigns, and other means to raise funds.

The workforce involved with Nightingale House includes care professionals across varying levels of physical, emotional, spiritual, and social care. There is a facilities management team responsible for the

[See testimonial 6](#)

RNB COMMERCIALS

OUR SERVICES

- REVIEW ARRANGMENTS - SAFETY, HEALTH AND ENVIRONMENTAL ASSESSMENT
- GAP ANALYSIS - REVIEW H&S POLICY BASED ON THE MODEL OF THE HSE PLAN, DO, CHECK AND ACT
- VEHICLE MANAGEMENT REVIEW
- WORKING AT HEIGHT OPERATIONS - REVIEW, ASSESSMENT AND GUIDANCE
- SHE COMPETENT SUPPORT
- CONTRACTOR PRE QUALIFICATION PROCESS
- COSHH & DSEAR GAP ANALYSIS & GUIDANCE
- REGULAR H&S UPDATE MEETINGS - ONLINE AND IN-PERSON

Assessment demonstrated many areas where the business had identified hazards, assessed risk, and applied suitable and appropriate measures.

Where arrangements were found wanting, or lessons have been learnt through both internal and external investigations, the team have been open to advice and suggestion and have driven change from a leadership level and throughout the workforce with our support.

Safety For were appointed as H&S Advisors to RNB Commercials in 2022 and have been retained to advise and support the business and develop any future requirements.

RNB Commercials are the largest VOSA test centre in the North West of England and test over 4,000 vehicles each year. They are a one stop shop offering mobile workshops, commercial ATF and preparation, private vehicle MOTs, 24-hour roadside assistance, tachograph centre, bodyshop and workshop bays.

Having a team which spans the workshops, yard area, MOT assessment bays and the supporting administration team, there are a number of roles to consider and apply appropriate health and safety arrangements.

Our initial Safety, Health & Environmental (SHE)

[See testimonial 7](#)

CONTRACTOR SUPPORT EXEMPLARS



ST MODWEN HOMES

OUR SERVICES

- DEVELOPMENT OF A FULL SUITE OF SITE CONTROL DOCUMENTS
- DETAILING CONSTRUCTION PHASE PLANS FOR EVERY SITE AND PROJECT
- PERMIT TO WORK PROCESS, AND DOCUMENTS
- SITE AUDITING AND INSPECTION PROGRAMME
- ON-SITE H&S SUPPORT (FOR SOME SITES) SITE MANAGER SUPPORT ON ALL SITES
- PRODUCING H&S INPUT INTO SENIOR MANAGEMENT MEETINGS
- UNDERTAKING ACCIDENT INVESTIGATIONS
- REVIEWING ACCIDENT INVESTIGATIONS - IDENTIFY EFFECTIVENESS
- ENVIRONMENTAL SERVICES
- CONNECTING WITH LOCAL SCHOOLS, AND THE GENERAL PUBLIC, IN CONJUNCTION WITH THE CONSIDERATE CONSTRUCTOR SCHEME 'IVOR GOODSITE' VISITS.



The Safety For team became involved with St Modwen Homes in their infancy and supported them in becoming the multi award-winning housebuilder they are today. Beginning with the first housing development project by St Modwen Properties, Mark Dyche was initially asked to create a H&S Policy, including a complete management system and operational documentation.

As the project grew, we also provided on-site H&S support, site auditing and general CDM advice and guidance, offering advice at project meetings and creating an operational file system to manage daily site activities.

We were also tasked with helping develop a competent supply chain through tailored pre-qualification assessments. This was all managed through site support days where we interacted with the trades to encourage open-door discussions and promote a positive safety culture.



The success of the first site saw the support of Safety For being implemented on a further 19 developments nation-wide, including; London, South Wales, Midlands and North West.

In 2009, we wrote a H&S strategy which was a key requirement for St Modwen to acquire all of BP's disused land in the UK. Part of this acquisition led to another foundation in the emergence of St Modwen Homes, in constructing Coed Darcy- Demonstration Village.

The project was part of The Prince's Foundation scheme and the design of the buildings drawing inspiration from the Welsh locality in terms of style, construction techniques and resources, intended to test a range of building materials, building types and sustainable technologies before they were applied on a wider scale.

We were also tasked with helping develop a competent supply chain for St Modwen Homes, through tailored pre-qualification assessments, and design risk management monitoring and review.



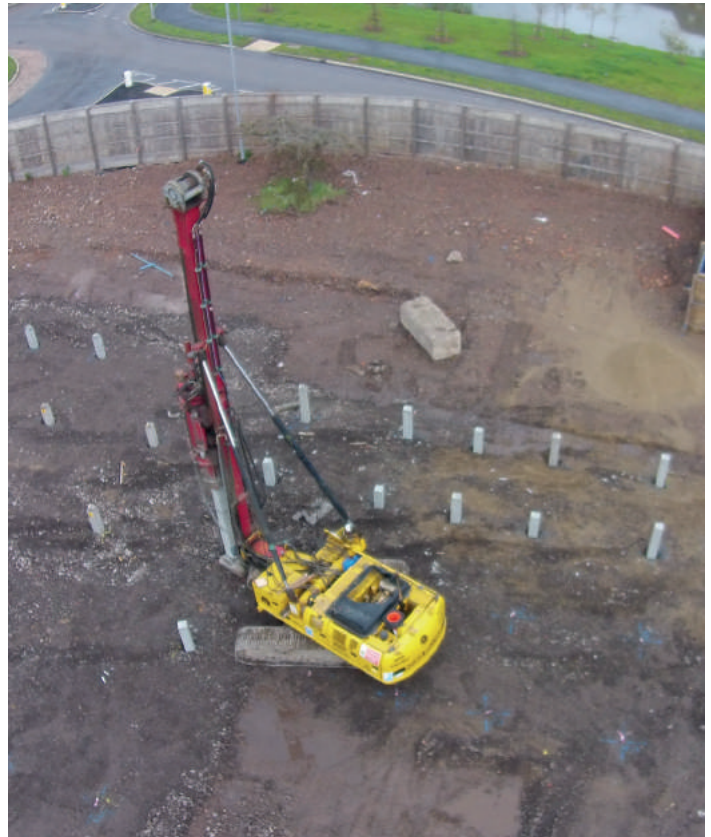
[See testimonial 8](#)



SMALL & MEDIUM CONSTRUCTION, SERVICES & MAINTENANCE COMPANIES

OUR SERVICES

- COMPETENT SUPPORT
- CDM ADVISOR AND FULFILLING THE PRINCIPAL DESIGNER ROLE ON PROJECTS
- SITE AUDITING AND INSPECTION PROGRAMME
- DEVELOPMENT OF A FULL SUITE OF SITE CONTROL DOCUMENTS
- DETAILING PROJECT CONSTRUCTION PHASE PLANS
- CREATING RISK ASSESSMENT AND METHOD STATEMENT
- SHE MANAGEMENT POLICY/ARRANGEMENTS
- CONTRACTOR PRE-QUALIFICATION ASSESSMENT AND SSIP ACCREDITATION SUPPORT
- UNDERTAKING ACCIDENT INVESTIGATIONS
- REVIEWING ACCIDENT INVESTIGATIONS - IDENTIFY EFFECTIVENESS
- ENVIRONMENTAL SERVICES
- PROVISION OF TRAINING INCLUDING ASBESTOS AWARENESS - MANUAL HANDLING - FIRST AID - ABRASIVE WHEELS - WORK AT HEIGHT



Safety For provide competent safety, health and environmental services and advice, taking a proactive approach when working with construction contractors and developers to keep their people safe and their projects compliant.

We have a proven track record as health and safety consultants in the construction industry, having worked with some of the biggest contractors and developers on some of the most significant projects across the country.

We appreciate that everyone needs help from time to time, so whether you are setting up a new family-owned contracting business, or, are a well-established, multi-national developer; Safety For offers bespoke employer support packages tailored to your needs. We can help contractors set up their whole suite of health and safety management documentation or help refine what is in place already.

Safety For can act as a retained H&S advisor to companies that don't have an individual or team employed to do the role, providing competent advice and enabling companies to prove they have the resources when applying for tenders or accreditations.

We firmly believe that health & safety is only successful when applied with pragmatism, therefore, our systems and documents are created to provide tangible benefits to the Client.

Over the last 20 years the Safety For team have provided safety, health and environmental advice, support and training to an abundant number of varied construction, services and maintenance companies across the local (midlands) and national areas of the UK, including; Owen Homes – Sircar Builders – WT Hopwood – Shingler Homes/ Construction – McFour Ltd – North Staffs Pipes Services – AC Jackson Steel Erectors – DA Hayward Steel Erectors





[See testimonial 9, 10 & 11](#)

– Blackham Reclamation – Cladding Design Services – Emerton Homes – Fowler & Gilbert – Gillway Services – Lothlorian – PG Mullock – Ready Pave – The Green Electrician – Union Installation Services – Princes LHS.

The team have undertaken workplace/task-based risk assessments, writing associated method statements and Construction Phase Plans for the whole range of construction undertakings and types of projects. Supporting Clients who require guidance and support with obtaining SSIP accreditation, including Construction Line and CHAS, enabling them to be placed on Client's approved contractor's lists, to tender for future works.

Safety For support small and medium-sized company's within the construction sector, with site auditing and inspection programmes, not only to provide an independent assessment of site operations, but working with the site management teams in improving health and safety on site.

Another element of Safety For value to our clients, is supporting them in accident prevention and investigations. Safety For have demonstrable success in providing support in accident investigation and communicating with HSE, and compliance with HSE investigations and demands.



PRINCIPAL DESIGNER
& CDM ADVISOR
EXEMPLARS



PRINCIPAL DESIGNER & CDM ADVISOR FRIARGATE



Friargate is a 2.35 million sq ft, major regeneration development in a strategically vital part of Coventry. The masterplan is being undertaken by Friargate Coventry LLP, a partnership between Coventry City Council and Cannon Kirk Group, with the award-winning lead designer, architects and master planners, Allies Morrison. The masterplan will bring 25 buildings to the city, including premium quality, energy efficient offices, along with two hotels, a range of homes, retail and leisure units and lively new public space.

Demolition Phase

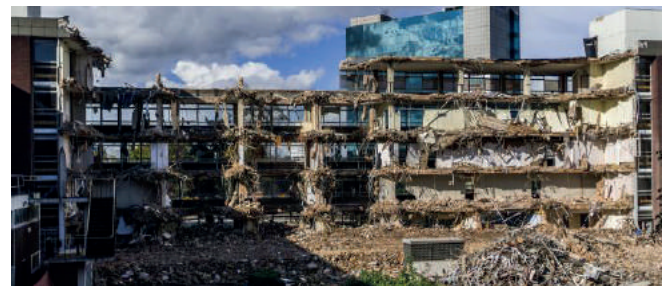
Mark Dyche, Managing Director of Safety For, was the CDM Co-ordinator (CDMC) for the explosive demolition of the Coventry Massey Ferguson tower in 2012, having already worked closely with Coventry City Council, Mark was appointed by Cannon Kirk Group as CDMC in 2014 for the demolition and preparation of the site.

Mark used his experience to help keep the initial demolition phase on track, offering CDM/H&S advice and support to Hughes Demolition (Principal Contractor) often out of the normal CDM-C role and responsibility.

Friargate One

Mark Dyche was then appointed as Principal Designer for the pre-construction phase (RIBA Stage 2-4) and CDM Advisor for the construction phase (RIBA Stage 5-7) of Coventry City Council new £40m headquarters. This was the first of the scheme, an exemplary, twelve storey commercial space providing first class leading accommodation to thousands of staff at Coventry City

CLIENT – FRIARGATE LLP
ROLE – CDM ADVISOR
& PRINCIPAL DESIGNER
VALUE – £700 MILLION
SECTOR – COMMERCIAL, RETAIL,
LEISURE, HOTEL & RESIDENTIAL
ASPECTS – DEMOLITION, CIVILS,
CONSTRUCTION, O&M COLLATION



Council, Homes England and the Financial Ombudsman Service.

Friargate Two

Mark and the Safety For team then went on to be appointed pre-construction Principal Designer for Friargate 2, the second building in the masterplan programme, a twelve-storey space, totalling 134,000 sq ft with individual floorplates of up to 11,000 sq ft.

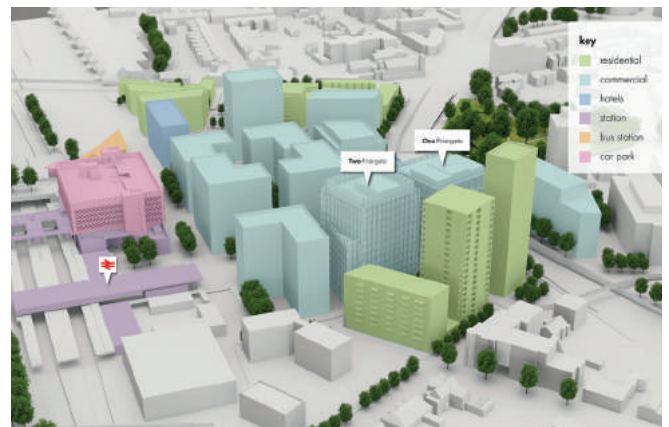
The Client novated Mark as Principal Designer to Bowmer & Kirkland (Principal Contractor) for the construction phase, which ensured continuity in the design risk management process, throughout the project 'lifecycle'.

Another experienced colleague from the Safety For team, then took on the CDM Advisor role, acting as the 'critical friend' for the construction phase, ensuring the Client, had an independent perspective on all things CDM and H&S.

Safety For were also commissioned to produce the Operation & Maintenance (O&Ms) manuals on behalf of Bowmer & Kirkland, a collaboration and process that proved invaluable in providing the information to the Client/building user, whilst taking a lot of the stress and strain from the project management team.

Site-Wide Principal Designer

Safety For continues to work as the masterplan Principal Designer on pre-construction and construction aspects of the scheme, providing health and safety guidance/coordination in the design process, working closely with the design teams and Friargate Coventry LLP delivering, vacant land site auditing, temporary works inspections, and 'City of Culture' event planning and coordination. Safety For also supported the construction of the new railway station and bus terminus, the feasibility, siting and construction of a Drone Airport, as well as several infrastructure and services schemes.



PRINCIPAL DESIGNER & CDM ADVISOR SWANSEA UNIVERSITY



Swansea University's Bay Campus was, at the time, one of the largest knowledge economy projects in the UK and among the top five in Europe. An impressive development, the university has the distinction of being one of the few global universities with direct access onto a beach and its own seafront promenade. The Campus provides academic, student accommodation and research space.

The Safety For team were originally appointed CDM in 2012 for the Swansea University's Bay Campus, first phase, which was located on the 65-acre former BP Transit site in Neath Port Talbot, on the eastern approach into Swansea, immediately adjacent to a Site of Special Scientific Interest (SSSI)

As the CDM for phase 1a and 1b of the project we were working with main construction companies Vinci Construction, Morgan Sindall and Galliford Try, as well as other contractors, ensuring communication and co-ordination in design and delivery of the project.

Most of the above phases of the project were completed during the transitional period of CDM2015.

VINCI Construction UK was awarded the £30 million contract to build five additional student accommodation blocks, comprising 543 rooms, at Swansea University Bay Campus. The overall site is being developed by St. Modwen Developments Limited, in partnership with the University. This phase of accommodation was completed and open on time, to new students in autumn 2017.

CLIENT - ST MODWEN DEVELOPMENTS
ROLE - CDM ADVISOR
& PRINCIPAL DESIGNER
VALUE - £150 MILLION
SECTOR - EDUCATION
ASPECTS - ENVIRONMENTAL, CIVILS,
CONSTRUCTION, O&M COLLATION



VINCI Construction UK, appointed the Safety For team to undertake the Principal Designer role for this project. This was following the continued success the Safety For team had as the CDM Coordinator (under the 2007 CDM Regulations), for Phases 1A and 1B.

The accommodation followed the same traditional design concept as the previous phases delivered by VINCI Construction UK in September 2015, with traditional style frontages, with commanding front door entrances set within stone surrounds, tall ceilings and large sized windows in a collegiate courtyard layout arrangement. The blocks range in scale from 69 beds over four storeys to 159 beds over eight storeys.

The previously completed phases of accommodation and academic buildings were fully occupied and operational, which involved difficult coordination and communication issues that were overcome with good planning and design management.

The Safety For team, working in conjunction with a dedicated design team, were able to identify several significant design risks that could have impacted on the end users, and facilities management. However, early identification of hazards, enabled the design team to develop the design, so that the issues were designed out, or mitigated to an acceptable level. This prevented potentially costly changes later in the build programme that could have impacted on the handover deadlines.

The Safety For team were also appointed to collate the comprehensive operational and maintenance manuals (O&Ms) for the Principal Contractor, Vinci Construction UK. With our detailed knowledge of the design and the relationship we had established with all the contractors, full manuals were issued at all 3 phased handovers, prior to the practical completion dates.

Under the former title Safety For Design, our PD and CDM team went on to win the Association Project Safety (APS) Principal Designer of the Year Award 2018, based on the application of our CDM Policy to drive a clear and coordinated design risk management process.



[See testimonial 16](#)



PRINCIPAL DESIGNER & CDM ADVISOR PROJECT MARSHALL



Safety For Ltd became involved in Project Marshall with Thales UK in 2016 after the previous Principal Designer had failed to meet their obligations, leaving the Client at risk of non-compliance with the Construction (Design & Management) Regulations 2015.

Project Marshall is a £1.5 billion Ministry of Defence (MOD) project which will transform the military Air Traffic Management (ATM) capability at all MOD operated sites in the UK and overseas.

Construction work involves the installation of various ATM equipment, including radars, Wide Area Multilateration (WAM) systems, their superstructures and associated civils. This would also ensure that daily operations at the airfields continue un-interrupted.

Initially Safety For were brought in by Thales UK to complete "Mode S", covering 24 sites around the country. Following the successful completion of this phase, the Safety For team were awarded a contract to carry out the Principal Designer and CDM Advisor roles for the remainder of the project which consists of another 35 sites across the UK and overseas.

Due to the scale of Project Marshall, Safety For are responsible for liaising with a large number of stakeholders from across the country, co-ordinating design risk management as part of a whole range of different design teams. Safety For ensure that all projects are compliant with both the CDM2015 Regulations, and the strict standard set out by the MOD.

CLIENT – AQUILA ATMS.
ROLE – PRINCIPAL DESIGNER
& CDM ADVISOR.
VALUE – £1.5 BILLION.
SECTOR – MINISTRY
OF DEFENCE
ASPECTS - CIVILS,
CONSTRUCTION,
ENVIRONMENTAL



PRINCIPAL DESIGNER ADVISOR OWENS PARK, UNIVERSITY OF MANCHESTER



CLIENT – VINCI
CONSTRUCTION LTD.
ROLE – PRINCIPAL
DESIGNER & CDM ADVISOR.
VALUE – £75 MILLION.
SECTOR – EDUCATION.
ASPECTS - CIVILS,
CONSTRUCTION, O&M
PROVISION

Safety For were appointed by VINCI Construction (UK) Ltd to undertake the Principal Designer Advisor Role for this project, following the continued success the partnership has seen on the Swansea University Bay Campus Scheme.

VINCI Construction (UK) Ltd were awarded the £75 million contract to build eight accommodation blocks that would consist of 1,122 bedrooms in the planned Fallowfield Student Village Project at Owen's Park, Manchester. Alongside these accommodation blocks there will be an energy centre, student amenity hub and associated landscaping. This is only Phase 1 of a much larger enterprise.

VINCI Construction (UK) Ltd's work began in February 2018, following the collapse of Carillion, who were previously awarded the contract. The change in Principal Contractor brought with it numerous challenges, as works such as foundations had been left incomplete.

Fallowfield Student Village will include a student hub, incorporating facilities for students living on and off the campus, improved sports facilities accessible to students, local residents and local sports clubs, landscaping and an improved frontage onto Wilmslow Road including retail outlets.



[See testimonial 13](#)



PRINCIPAL DESIGNER WESTON ROAD, CREWE



Safety For were appointed by Caddick Construction Ltd to undertake the construction phase Principal Designer role for this project. This is part of the continued working relationship between the two companies having successfully completed many schemes together in the past, including The Blue Light Hub at Ulverston (testimonial below) which was significant in Caddick Construction Ltd taking the decision to appoint Safety For on this project.

Caddick Construction Ltd was awarded the contract to design and build a new 111,287 sq ft speculative distribution facility in Crewe, for Cabot Properties.

The works consisted of the construction of a high specification distribution facility with 7,437 sq ft of office space, 10 dock level loading bays, accommodation for 20 heavy goods vehicle trailers and extensive car parking.

The warehouse is situated between Junction 16 and 17 of the M6, which is managed by Quorum, and was completed in autumn 2018.

CLIENT – CADDICK
CONSTRUCTION LTD
ROLE – PRINCIPAL DESIGNER
VALUE – £4.2 MILLION
SECTOR – COMMERCIAL
ASPECTS – CIVILS,
CONSTRUCTION



[See testimonial 15](#)



PRINCIPAL DESIGNER LIVERPOOL SHOPPING PARK



CLIENT - DERWENT
HOLDINGS LTD
ROLE - PRINCIPAL
DESIGNER
VALUE - £150 MILLION
SECTOR - RETAIL
ASPECTS - CIVILS,
CONSTRUCTION,
O&M PROVISION

Safety For were approached to work on this project after the Client became disenchanted with the previous Principal Designer, who had failed to meet their obligations, leaving the Client in jeopardy of non-compliance with CDM2015. Caddick Construction Ltd recommended Safety For to the Client, to undertake the role due to an already established working relationship.

Liverpool Shopping Park is one of the UK's biggest retail and leisure destinations of its kind and totals over 727,000ft² of mixed-use commercial development. Comprising of 41 medium to large retail units, cinema, bowling alley and 12 restaurants. There is parking for 1500 cars and a significant leisure offering.

Safety For facilitated the co-ordination between Caddick and the fit-out contractors to ensure their works did not interfere with each other, while ensuring the CDM responsibilities for each party were clearly defined. Safety For developed maintenance, cleaning and access strategies for each phase which were included in the Health & Safety File.

As Principal Designer, Safety For were able to provide a robust access and maintenance strategy, supported through their design risk assessment process, that reduced the reliance on 'man-safe' systems on all units, an aspect that was originally designed in, as a result of planning. Safety For's successful challenge of this previous stipulation by another party, offered the chance to review and amend the access and maintenance strategy, which in turn, saved the project a significant cost, whilst reducing the overall maintenance risk.



[See testimonial 14](#)



PRINCIPAL DESIGNER ST CRISPINS HOUSE



Safety For were appointed by Global Student Accommodation UK Ltd (GSA) as the Principal Designer for RIBA stage 2 – 7 on the St Crispins House project in Norwich, one of many student accommodation refurbishment projects, borne out of the necessity to improve fire safety, in the wake of the Grenfell fire disaster in 2016.

The new accommodation will provide bedspaces to circa 686 students studying in the nearby university.

Safety For were a key member of the design team, involved in many of the design team meetings, ensuring the design risk management process was followed.

During the pre-construction phase, Safety For assisted the Client in providing adequate pre-construction information. This was a challenging task as the building was over 50 years old, and had limited available information to support the scope of works required to transform this building into a new and modern student accommodation facility.

GSA needed assurance that their project would fall in line with current health and safety legislation. Appointing Safety For as Principal Designer assured them that they would keep all duty holders aware of their duties.

Safety For have helped by offering pragmatic and practicable advice in the active monitoring of McAleer & Rush's (Principal Contractor) health and safety performance, by reviewing their Construction Phase Plan, carrying out inspections and offering advice to their staff.

Safety For have been working with GSA for several years providing the Principal Designer role and CDM advice on many projects around the country. As part of our role within the team, we have also provided GSA Leadership with H&S training, general H&S training, assistance in formulating GSA H&S Policy, CDM documentation, accident investigation services, etc.

CLIENT – GSA
ROLE – PRINCIPAL DESIGNER
VALUE – £4.2M
SECTOR – COMMERCIAL
ASPECTS – CIVILS, CONSTRUCTION



TESTIMONIALS



1 *"SAFETY FOR SYSTEMS FOR THE DELIVERY OF THE PROJECT O&M'S IS THE BEST INTERFACE WITH CDM I HAVE EXPERIENCED. THE SAFETY FOR TEAM PROVIDED HELPFUL, INFORMATIVE INPUT, BUT WITHOUT BEING INTRUSIVE AT THE DESIGN STAGE; AND A COLLABORATIVE APPROACH IN BRINGING THE H&S FILE AND OPERATION AND MAINTENANCE MANUALS TOGETHER.*
I HAVE USED THE SERVICES OF SAFETY FOR ON NUMEROUS PROJECTS SINCE AND I HAVE ALWAYS BEEN PLEASED WITH THE DELIVERY AND WOULD RECOMMEND SAFETY FOR SERVICES AS PRINCIPAL DESIGNERS, AND COLLATING OPERATIONAL & MAINTENANCE MANUALS, TO ANYONE."

- PETER DODD, VINCI PROJECT MANAGER

2 *"SAFETY FOR HAVE BEEN EXCELLENT IN SUPPORTING BIRMINGHAM WHOLESALE MARKET WITH OPERATIONAL HEALTH AND SAFETY ASSISTANCE. ORIGINALLY BROUGHT IN TO UNDERTAKE A REVIEW OF H&S ARRANGEMENTS, THE TEAM OF ADVISORS LEARNT ABOUT THE MARKET ENVIRONMENT, THE PEOPLE INVOLVED AND THE POTENTIAL RISKS TO BE MANAGED, AND THEN DEVELOPED BESPOKE SHE POLICY, ROBUST, SYSTEMS AND SUPPORTING DOCUMENTATION TO DIRECT AND CAPTURE THE ARRANGEMENTS MANAGED BY THE OPERATIONS TEAM TO ENSURE COMPLIANCE.*

AS GENERAL MANAGER, I NEEDED TO FIND A COMPANY THAT COULD PROVIDE ME WITH A BESPOKE SERVICE, A HIGH LEVEL OF EXPERTISE AND PROFESSIONALISM BUT WHO WAS ALSO PREPARED TO ASSIST AND SUPPORT THE DEVELOPMENT OF OPERATIONAL ACTIVITY WHILST HELPING TO FACILITATE THE REQUIRED CULTURE CHANGE. IN A CHALLENGING ENVIRONMENT, SAFETY FOR HAS PROVEN TO BE A VALUABLE ASSET NOT ONLY IN SAFETY, HEALTH AND ENVIRONMENT (SHE) MANAGEMENT BUT ALSO WITH ITS EXPERTISE IN CONSTRUCTION, DESIGN AND MANAGEMENT (CDM).

RISKS ASSOCIATED WITH THE MARKET ENVIRONMENT HAVE BEEN ASSESSED AND THE SAFETY FOR ADVISORS HAVE OFFERED SUGGESTIONS AND GUIDANCE ON OPTIONS TO REDUCE AND MITIGATE RISK WHEREVER POSSIBLE. THE REGULAR REVIEW AND RECORDING IS MANAGED VIA SAFETY FOR'S RISKMAN® INTERACTIVE RISK MANAGEMENT SYSTEM, WHICH IS APPLIED IN THE DAY-TO-DAY MANAGEMENT OF THE MARKET, ALLOWING US TO DIRECT OUR EFFORTS APPROPRIATELY.

REGULAR VISITS TO OFFER A THIRD-PARTY PERSPECTIVE ON THE ONSITE ACTIVITIES AND HELP US TO MANAGE THE HEALTH AND SAFETY OF ALL WHO OPERATE IN AND VISIT THE MARKET, INCLUDING CONTRACTOR ENGAGEMENT AND MANAGEMENT.

SAFETY FOR HAS OFFERED IN-TIME SUPPORT AS WELL AS PROACTIVE MEASURES SUCH AS SHE WORKING GROUPS AND SAFETY CAMPAIGNS AIMED AT REDUCING HIGH RISK AREAS AND WE FEEL CONFIDENT, COMPLIANT AND SUPPORTED WITH THEM ON BOARD."

- ANDREW BARNES, MARKET GENERAL MANAGER

3 *"MARK DYCHE, SAFETY FOR, GROUP MANAGING DIRECTOR PROVIDES SAFETY, HEALTH AND ENVIRONMENTAL ADVICE AND SUPPORT TO BIRMINGHAM WHOLESALE MARKET, BOARD OF DIRECTORS. EMPLOYING A 'CRITICAL FRIEND' APPROACH TO MARKET MANAGEMENT AND OPERATIONS, MARK GUIDES OUR HEALTH AND SAFETY DEVELOPMENT STRATEGY, SUCH AS SETTING H&S INITIATIVES FOR IMPROVING HIGH RISK AREAS - HEADING-UP THE H&S WORKING GROUP - ANALYSING OPERATIONAL H&S EFFECTIVENESS AND INTERROGATING STATISTICS.*

MARK PROVIDES THAT CRUCIAL CONDUIT BETWEEN THE BOARD AND MARKET OPERATION TO ENSURE THE BOARD IS INFORMED, PROACTIVE AND MOST IMPORTANTLY 'LEADING FROM THE TOP' IN OUR EXPECTATIONS FOR A SAFE MARKET ENVIRONMENT FOR ALL."

- KEITH SIMPSON, CHAIRMAN, BOARD OF DIRECTORS

4 "AFTER BEING REFERRED TO SAFETY FOR THROUGH A FRIEND, WE STARTED ENGAGING WITH MARK AND LISA LATE 2021. BEING A NEW FACILITY (C. 18 MONTHS OLD) SAFETY FOR HELPED US WITH 'FRESH EYES' LOOK AT OUR H&S MANAGEMENT SYSTEMS, THEY CARRIED OUT AN IN-DEPTH GAP ASSESSMENT WITH A CLEAR PRIORITY PLAN FOR IMPROVEMENTS INTO 2022. ONE OF THE MAJOR PIECES OF WORK THAT SAFETY FOR LED WAS LAUNCHING OUR H&S CHAMPION TEAM, BUILDING BESPOKE TRAINING, AND DELIVERING THIS TO OVER 20 SQUAD MEMBERS ACROSS 8 SHIFT PATTERNS, THE TRAINING WAS REALLY WELL RECEIVED, AND MARK & LISA WERE ON-HAND FOLLOWING THE SESSION TO ANSWER ANY QUESTIONS AND TRULY EMBED THE LEARNINGS. WE ARE MORE THAN HAPPY WITH THE LEVEL OF PROFESSIONAL SUPPORT THAT IS PROVIDED AND ARE LOOKING FORWARD TO AN EXCITING PARTNERSHIP TOGETHER."

- MARC CROSSFIELD, HEAD OF ENGINEERING

5 "FOLLOWING A DETAILED HEALTH AND SAFETY AUDIT WHICH HIGHLIGHTED A RANGE OF RECOMMENDATIONS, CHIRK TOWN COUNCIL REALISED IT NEEDED SPECIALIST SUPPORT TO HELP WORK THROUGH ADDRESSING THESE RECOMMENDATIONS. SAFETY FOR WERE APPOINTED AS CHIRK TOWN COUNCIL'S HEALTH & SAFETY COMPETENT SUPPORT AND CONSULTANTS. THE TEAM AT SAFETY FOR TOOK TIME TO UNDERSTAND OUR ORGANISATION, PREMISES AND STAFF AND WORKED ALONGSIDE US TO DEVELOP AN ACTION PLAN TO ADDRESS THE RECOMMENDATIONS IN A LOGICAL ORDER. THE TEAM HAVE BEEN VERY SUPPORTIVE, KNOWLEDGEABLE, AND PROFESSIONAL. AS A SMALL COUNCIL FACED WITH A RANGE OF RECOMMENDATIONS IN SUCH A SERIOUS AREA, IT FELT, AT TIMES, OVERWHELMING, BUT THE TEAM AT SAFETY FOR HAVE BEEN VERY REASSURING AND THOROUGH AND HELPED THE SENIOR OFFICER CONSIDERABLY. THE COUNCIL HAS ADDRESSED A SUBSTANTIAL AMOUNT OF WORK WITH SAFETY FOR HELP, AND I WOULD RECOMMEND THEIR SERVICES TO OTHER ORGANISATIONS."

- KAREN BROWN, CLERK, CHIRK TOWN COUNCIL

6 "NIGHTINGALE HOUSE HOSPICE HAS WORKED IN PARTNERSHIP WITH THE SAFETY FOR GROUP FOR THE PAST FEW YEARS AS OUR APPOINTED COMPETENT SUPPORT, THEIR ADVICE AND GUIDANCE DURING THIS TIME HAS BEEN INVALUABLE. SAFETY FOR HAVE DEVELOPED AN UNDERSTANDING OF OUR ORGANISATION IN ORDER TO OFFER A TAILOR-MADE SERVICE AND ADVICE IN THE AREA OF HEALTH AND SAFETY EXPERTISE THAT IS RIGHT FOR THE HOSPICE. OUR PARTNERSHIP WITH SAFETY FOR IS VERY MUCH VALUED BY THE BOARD OF TRUSTEES AND MANAGEMENT TEAM AND PROVIDES ASSURANCE THAT HEALTH AND SAFETY COMPLIANCE IS ROBUST FOR THE BENEFIT OF OUR STAFF, VOLUNTEERS AND MOST IMPORTANTLY OUR PATIENTS AND THEIR LOVED ONES."

- SAM SCOTT, OPERATIONS MANAGER, NIGHTINGALE HOUSE HOSPICE

7 "FOLLOWING A RECOMMENDATION IN EARLY 2022 WE APPOINTED SAFETY FOR TO PROVIDE US WITH COMPETENT SUPPORT AND ONGOING HEALTH & SAFETY ADVICE. THE INITIAL SHE ASSESSMENT WAS VERY COMPREHENSIVE, IT HELPED US TO IDENTIFY THE AREAS IN WHICH WE HAD POTENTIAL GAPS OR REQUIRED SOME IMPROVEMENT. THE TEAM THEN ASSISTED WITH DEVELOPING A PLAN AND PROVIDED ASSISTANCE AND GUIDANCE TO HELP US CLOSE THE TASKS OUT. TODAY THE SAFETY FOR TEAM CONTINUE TO PROVIDE US WITH SUPPORT AND ARE VERY PRO-ACTIVE IN HELPING US ON OUR JOURNEY WITH CONTINUOUS IMPROVEMENT IN THE AREA OF HEALTH & SAFETY. LISA AND HER TEAM ARE ALL KNOWLEDGEABLE, PROFESSIONAL AND FRIENDLY, FURTHERMORE THEY ARE ALSO PRACTICAL WHEN IMPLEMENTING CHANGES WHICH IS KEY TO THE SMOOTH RUNNING OF OUR BUSINESS"

- MARTIN WOOSNAM, MANAGING DIRECTOR, RNB COMMERCIALS

8 *"THE TEAM FROM SAFETY FOR HAVE WORKED WITH ST MODWEN HOMES FROM THE START OF OUR BUSINESS, SUPPORTING OUR GROWTH INTO AN AWARD-WINNING HOUSEBUILDER. SAFETY FOR PROVIDE A RANGE OF SERVICES, INCLUDING SITE AUDITING, ACCIDENT INVESTIGATIONS AND DOCUMENT DEVELOPMENT. THEY HAVE ASSISTED US IN DEVELOPING GOOD COMMUNITY RELATIONSHIPS, BY DELIVERING 'IVORGOODSITE' TALKS AT PRIMARY SCHOOLS AND HAVE ALSO WORKED WITH OUR SALES TEAMS TO ENSURE VISITOR SAFETY ON OUR NEW DEVELOPMENTS, ENSURING ST MODWEN HOMES ARE COMPLIANT WITH RELEVANT HEALTH, SAFETY AND CDM LEGISLATION. SAFETY FOR HAVE ALSO COMMENCED COMPETENCY CHECKS FOR OUR SUPPLY CHAIN AND UNDERTOOK AN AUDITING AND INSPECTION PROGRAMME TO ASSESS PERFORMANCE OF OUR CONTRACTOR SUPPLY CHAIN, WHILST OFFERING GUIDANCE TO OUR SITE MANAGEMENT TEAMS IN DEVELOPING A POSITIVE SAFETY CULTURE."*

- LEON JENNINGS, ST MODWEN PROPERTIES - GROUP H&S SYSTEMS MANAGER

9 *"WE HAVE BEEN WORKING WITH LISA AND THE SAFETY FOR TEAM FOR OVER 10 YEARS. OVER THAT TIME WE HAVE FOUND THEM TO BE VERY PROFESSIONAL, HELPFUL AND FRIENDLY IN THEIR APPROACH. WHETHER IT HAS BEEN WITH THE ENGAGEMENT IN THE SET UP OF OUR SYSTEMS, ACCREDITATION SUBMISSION SUPPORT, ONGOING GENERAL HEALTH & SAFETY SUPPORT OR MORE SPECIFIC ACCIDENT INVESTIGATION OR SITE INSPECTIONS, THEY HAVE BEEN INTEGRAL IN OUR MANAGING AND MONITORING OF HEALTH & SAFETY THROUGHOUT OUR BUSINESS OPERATIONS. ALWAYS HAPPY TO HELP AND QUICK TO RESPOND, WITH POSITIVE RECOMMENDATIONS TO PROMOTE A POSITIVE HEALTH & SAFETY CULTURE IN OUR ONGOING COMMITMENT TO HEALTH & SAFETY."*

- JACKIE DAVIES, MCFOUR LTD

10 *"NORTH STAFFS PIPES HAVE BEEN PLEASED TO BE ASSOCIATED WITH THE SAFETY FOR TEAM FOR MANY YEARS. THEIR SUPPORT AND PROFESSIONAL GUIDANCE HAVE BEEN INVALUABLE TO THE BUSINESS. WE WOULD RECOMMEND TO ANY COMPANY LOOKING FOR SUPPORT TO GET THEM ON BOARD. WE LOOK FORWARD TO CONTINUED ASSOCIATION IN THE FUTURE."*

- KATIE PARISH, NORTH STAFFS PIPE SERVICE - COMPANY SECRETARY

11 *"AS A FAMILY RUN BUSINESS, WE DO NOT HAVE THE RESOURCES TO EMPLOY A FULL-TIME COMPETENT PERSON TO HELP US WITH OUR H&S OBLIGATIONS. WE HAVE EMPLOYED THE SERVICES OF THE SAFETY FOR TEAM FOR OVER 15 YEARS. OVER THAT TIME, WE HAVE FOUND THE TEAM PROFESSIONAL, HELPFUL, AND FRIENDLY IN THEIR APPROACH. SAFETY FOR ALWAYS RESPOND TO OUR REQUESTS, WITH A CONSTRUCTIVE APPROACH AND ENSURE OUR DOCUMENTS INCLUDING, CONSTRUCTION HEALTH AND SAFETY PLANS, RAMS, F10'S ARE IN PLACE FOR PROJECTS THAT WE WORK ON."*

- TREVOR OWEN, OWEN HOMES - MANAGING DIRECTOR

12 *"OVER THE PAST 4 AND A HALF YEARS, THE SAFETY FOR TEAM HAVE PROVIDED MYSELF AND MY COLLEAGUES WITH AN INVALUABLE SOURCE OF HEALTH AND SAFETY EXPERTISE AND GUIDANCE. THEY HAVE PROVIDED BOTH THE FUNCTION OF CDM CONSULTANTS AND PRINCIPAL DESIGNER, ENSURING OUR TEAM UPHOLDS THE SAME LEVEL OF SAFETY CONSCIENTIOUSNESS, AS WITHIN THEIR OWN TEAM. THEY ARE REFRESHING TO WORK WITH, PROVIDING ON TAP SUPPORT."*

- WEBBER FORBES, THALES GROUP UK - PROJECT MAANAGER

13 "VINCI CONSTRUCTION SELECTED THE TEAM FROM SAFETY FOR AS PD & CDM ADVISOR FOR THE FALLOWFIELD OWENS PARK PROJECT, TO SUPPORT VINCI CONSTRUCTION UK AS PRINCIPAL DESIGNER. THE SAFETY FOR SCOPE EXTENDED TO PRODUCING THE OPERATION AND MAINTENANCE MANUALS, ALONG WITH THE HEALTH & SAFETY FILE. THE SAFETY FOR TEAM SUPPORTED THE DEVELOPMENT OF THE PROJECT DESIGN, AND ENSURED STRATEGIES RELATING TO CLEANING, ACCESS AND MAINTENANCE WERE SAFE AND ROBUST. PRODUCTS AND MECHANISMS WERE ALSO REVIEWED TO ENSURE THE MOST PRACTICABLE SOLUTION WAS ACHIEVED WHEN CONSIDERING SAFE MEANS OF ACCESS/EGRESS AND ESCAPE. THROUGHOUT THE PROJECT THE TEAM FROM SAFETY FOR ATTENDED MEETINGS WITH VINCI CONSTRUCTION AND THE UNIVERSITY OF MANCHESTER, PROVIDING SUPPORT TO THE CLIENT DECISIONS AND SOLUTIONS. THE SAFETY FOR TEAM WERE A KEY MEMBER OF THE TEAM AND THE SOLUTIONS ACHIEVED ARE A TESTAMENT TO THEIR COLLABORATIVE AND INFORMATIVE APPROACH."

- MAT STOCKTON, DESIGN MANAGER, VINCI CONSTRUCTION (UK) LTD

14 "HAVING WORKED WITH THE SAFETY FOR TEAM ON SEVERAL SCHEMES, I WOULD HAVE NO ISSUES IN RECOMMENDING THEM TO ANY OF MY CLIENTS OR NETWORK. SAFETY FOR HAVE PROVIDED CLEAR AND PRAGMATIC GUIDANCE TO OUR CLIENTS, DESIGN TEAMS AND CONTRACTORS. THEY HAVE GUIDED US THROUGH THE CDM 2015 REGULATIONS TO ENSURE OUR PROJECTS ACHIEVE THE BEST POSSIBLE PRACTICE COMPLIANCE. THE BENEFITS OF THIS HAVE BEEN EVIDENT THROUGHOUT THE DESIGN, CONSTRUCTION, AND LIFE CYCLE OF OUR PROJECTS."

- RYAN RICHES, ARTAL (EMPLOYERS AGENT) - DIRECTOR

15 "CADDICK CONSTRUCTION WERE APPOINTED TO COMPLETE THE BLUE LIGHT HUB AT ULVERSTON, WHERE THE CLIENT HAD PUT THE SCHEME ON HOLD FOR TWO YEARS. SAFETY FOR UNDERTOOK THE PRINCIPAL DESIGNER ROLE, COORDINATING THE DESIGN RISKS FROM WHERE THE PREVIOUS PRINCIPAL CONTRACTOR AND PRINCIPAL DESIGNER LEFT OFF, DELIVERING A DIFFICULT HEALTH & SAFETY FILE, ENSURING COMPLIANCE WITH CDM2015 FOR ALL DUTY HOLDERS."

- DERICK BILLOWS, CADDICK CONSTRUCTION LTD - CONTRACTS MANAGER

16 "THE PROCESS SAFETY FOR PUT IN PLACE, FOR THE PROJECT IS THE BEST INTERFACE WITH CDM I HAVE EXPERIENCED..." AND "...SAFETY FOR'S GENERAL PRAGMATIC APPROACH WAS HELPFUL AND INFORMATIVE WITH THE RIGHT AMOUNT OF DESIGN INPUT, BUT WITHOUT BEEN INTRUSIVE AT THE DESIGN STAGE. AS A TEAM WE BELIEVE WE APPEAR TO HAVE RECEIVED THE SERVICE INTENDED FROM WHEN THE CDM REGULATIONS WERE FIRST INTRODUCED."

- PETER DODD, VINCI CONSTRUCTION UK - PROJECT MANAGER

17 "SAFETY FOR HAVE BEEN WORKING CLOSELY WITH ST MODWEN FOR THE PAST 10 YEARS AND HAVE BEEN INSTRUMENTAL IN HELPING BRING HEALTH & SAFETY MATTERS TO THE FOREFRONT OF OUR AGENDA. THEIR COMPETENCE, DEDICATION, INPUT AND GUIDANCE HAS HELPED FORGE NEW INITIATIVES AND SYSTEMS THAT ENSURE ALL DUTY HOLDER OBLIGATIONS UNDER THE HASAWA AND CDM 2015 REGULATIONS ARE MET."

- RICHARD CARTER, SENIOR DIRECTOR, ST MODWEN PROPERTIES PLC.

SAFETY FOR

BROAD OAK BARN,
OLD WOODHOUSES,
WHITCHURCH,
SHROPSHIRE,
SY13 4AG



01948 871 373
WWW.SAFETYFOR.CO.UK